

FLAMEC®



Flowmeter Catalog



GREAT PLAINS INDUSTRIES **GPI**

仕揚股份有限公司

網站：WWW.GPIMETER.COM.TW

電話：02-2567-2677-8

信箱：mtctech@ms43.hinet.net

傳真：02-2567-2709

104 台北市中山區松江路 206 號 6 樓之 8

QSTAR 超音波流量計

QSTAR ULTRASONIC FLOWMETERS (UFM)



These meters are available in two models:

- A portable for mobile sampling measurements
- A fixed for measuring tasks over an extended period of time and continuous measurements in fixed installations.

Both units use the proven and highly precise ultrasonic transit time difference method.

By employing state-of-the-art digital processors, these robust measurement flowmeters are extremely accurate and drift-free.

The non-intrusive flow measurement is virtually:

- 100% leak-proof
- 100% pressure-resistant
- 100% drift-free
- 100% wear-free and thus maintenance-free
- 100% free of pressure loss and thus energy-saving

QSTAR 超音波流量計 Flomec/GPI

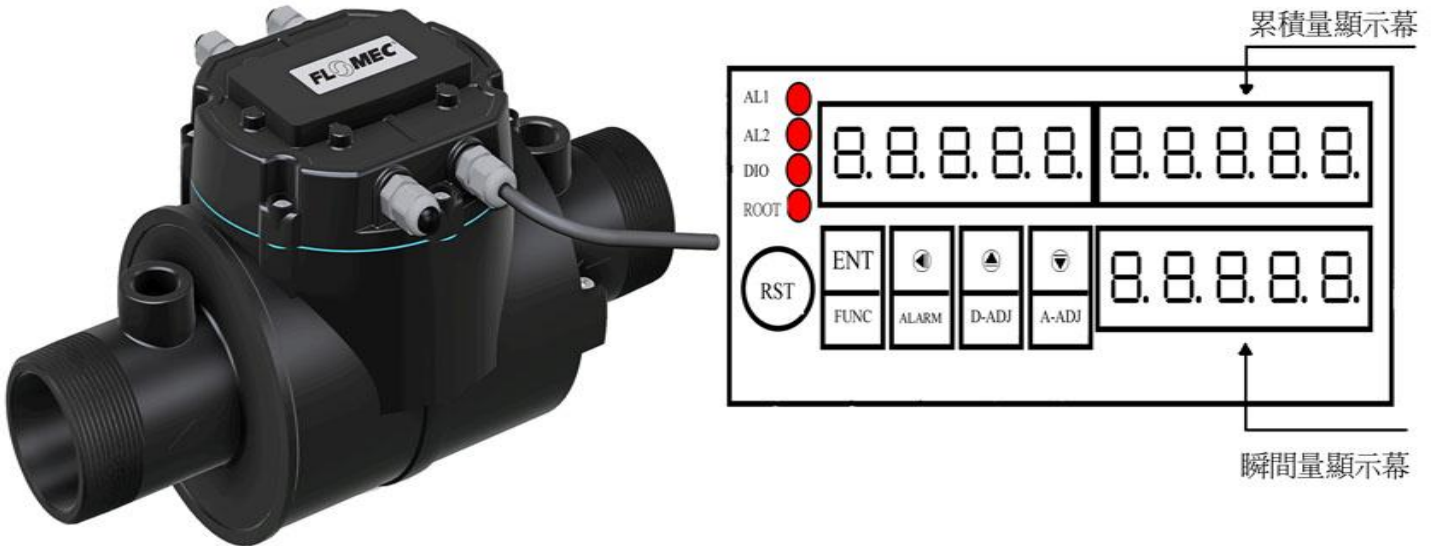
型式	手提式	固定式
Operation	Intuitive via 8 main keys(Soft Keys),plain text display	Intuitive via 8 main keys(Soft Keys),plain text display
Languages	English,Spanish and French	English,Spanish and French
Units	Metric/US	Metric/US
Outputs	2 x 4~20mA,1 x Relay,1 x MicroUSB 1 x Pulse	2 x 4~20mA,1 x Pulse,1 x MicroUSB 1 x Relay,RS232(opt.)
Inputs	2 x PT100	2 x PT100
Integrated Data Logger	2GB	N/A
Data Logged	Measurement and totalizers	N/A
Data Format	Can be exported into standard office programs	N/A
Memory Cycle	Adjustable,1 second to 24 hours	N/A
Power Supply	Integrated rechargeable battery and 100~240V AC adapter Battery Duration : Approximately 5 hours	85~264VAC,18~36VDC(opt.) Power Consumption : 10 W
Protection Class	IP40	IP65,Ex/ATEX(in preparation)
Housing	Aluminum,PVC	PVC,wall-mounted
Dimensions	10.4x7.5x2.7in.(26.4x19x6.8cm)	10.2x9.4x4.7in.(25.9x23.9x11.9cm)
Operating Temp	-4°F~140°F(-20°C ~ 60°C)	-4°F~140°F(-20°C ~ 60°C)
Transducer Temp	-40°F~300°F(-40°C ~149°C)	40°F~300°F(-40°C ~149°C)
Weight	3.3lbs (1.5kg)	2.9lbs (1.3kg)
Display	QVGA(320x240),black and white,adjustable backlighting	QVGA(320x240),black and white,adjustable backlighting
Carrying Case	20x16x16(50.8x40.6x40.6cm)	N/A

量測		量測精度		
Principle	Values Meas	Inner Diameter φ	Range	Deviation
Ultrasonic transit time difference with AFC technology	Flow,flow speed,heat flow	.39~.98in.(1.0~2.5cm)	6.56~98.42ft/s(2~30m/s)	2.5% of reading
	Totalizers Heat quantity,volume		0~6.56ft/s(0~2m/s)	±0.16ft/s(0.05m/s)
	Meas. Range ±98ft/s(±30m/s)	.98~1.97in.(2.5~5.0cm)	6.56~98.42ft/s(2~30m/s)	1.5% of reading
	Signal Damping 0~100 sec (adjustable)		0~6.56ft/s(0~2m/s)	±0.10ft/s(0.03m/s)
Diagnostic Functions Acoustic velocity,signal strength,SNR,signal quality,amplitude,energy		1.97~11.81in.(5.0~30.0cm)	6.56~98.42ft/s(2~30m/s)	1% of reading
Oscilloscope function allows graphical display and analysis of signals		11.81~236.22in.(30.0~600.0cm)	3.28~98.42ft/s(1~30m/s)	1% of reading
			0~3.28ft/s(0~1m/s)	±0.03ft/s(0.01m/s)
Repeatability for majority of applications is <0.2%				

型號說明

QME05 Ultrasonic Flowmeter(ENERGY-FIXED,,5MHz)8"~240"	QMP05 Ultrasonic Flowmeter(PORTABLE,,5MHz)8"~240"
QME10 Ultrasonic Flowmeter(ENERGY-FIXED,1MHz)1.5"~16"	QMP10 Ultrasonic Flowmeter(PORTABLE,1MHz)1.5"~16"
QME20 Ultrasonic Flowmeter(ENERGY-FIXED,2 MHz).5"~4"	QMP20 Ultrasonic Flowmeter(PORTABLE,2 MHz).5"~4"
QMF05 Ultrasonic Flowmeter(FIXED,,5MHz)8"~240"	QMF-PT100 Temperature Sensor Kit,FIXED(16ft./4.87m)
QMF10 Ultrasonic Flowmeter(FIXED,1MHz)1.5"~16"	QMP~PT100 Temperature Sensor Kit, PORTABLE (16ft./4.87m)
QMF20 Ultrasonic Flowmeter(FIXED,2 MHz).5"~4"	QMS-WTG Pipe Wall Thickness Gauge

QSE 電磁式流量感測器 (Electromagnetic)



尺寸：½" ¾" 1" 1½" 2" 3" 4" 7種
 接續：NPT，BSP，ANSI / DIN 法蘭
 功能：Totalizer / Flow Rate
 Pulse output (NPN Open Collector)
 Output：4-20mA / RS485
 Temperature sensor probes (溫度補償)

Pipe Size	Flow Range	Accuracy±0.5%	Accuracy±2%
½(05)	0.56 – 38 LPM	2.38 – 38 LPM	0.56 – 2.27 LPM
¾(07)	1.13 – 76 LPM	4.55 – 76 LPM	0.56 – 4.54 LPM
1 (10)	2.27 – 151 LPM	9.09 – 151 LPM	2.27 – 9.08 LPM
1½(15)	4.54 – 303 LPM	18.18 – 303 LPM	4.58 – 18.17 LPM
2 (20)	8.50 – 560 LPM	34 – 568 LPM	8.50 – 34.07 LPM
3 (30)	17 – 1138 LPM	68 – 1136 LPM	17 – 68.14 LPM
4 (40)	34 – 2271 LPM	136 – 2271 LPM	34 – 136.28 LPM



電磁流量計 (直接顯示型)

尺寸：½" ¾" 1" 1½" 2"

接續：BSP 牙口型

本體：NORYL(GFN3 PPE+PS).

電極：316 Stainless steel

(Electrodes)

耐溫：MAX 99°C

(Operationg : 82°C)

耐壓：10 BAR (150 PSIG)

工作壓力：Δ P0.682 PSIG

電壓：12 – 36VDC

功能：顯示累積量 / 流速

輸出：Pulse/4-20mA/RS485



電磁流量計 (直接顯示型)

尺寸：3" 4"

接續：ANS 150#法蘭

本體：NORYL(GFN3 PPE+PS).

電極：316 Stainless steel

(Electrodes)

耐溫：MAX 99°C

(Operationg : 82°C)

耐壓：10 BAR (150 PSIG)

工作壓力：Δ P0.682 PSIG

電壓：12 – 36VDC

功能：顯示累積量 / 流速

輸出：Pulse/4-20mA/RS485

GPI / Flomec (電子式)顯示：累積量，流速，歸零量

適合：純水、水、食品液體、藥用液體、有機溶劑、酸鹼液體



Pipe Size : ½" ¾" 1" 1½" 2"
Flow Range : 3.8~760 l/min
Pressure : Max 102 Bar (OP: 高壓: 207 bar)
Accuracy : ±1% Rep : ±0.1%
Temperature : 120°C(分離) 60°C(一體型)
Materials : SUS316, Aluminum, Brass
Output : 33-470Hz (NPN Open Collector)
Connection : ISO, NPT, 牙口式



Pipe Size : ¾" 1" 1½" 2" 2½"
Flow Range : 3.8~760 l/min
Pressure : Max 10 Bar
Accuracy : ±1% Rep : ±0.1%
Temperature : 120°C(分離) 60°C(電腦)
Materials : SUS316
Rotor : PVDF
Output : 33-470Hz (NPN Open Collector)
Connection : Tri-Clamp、夾接式 (食品級)



以上產品顯示功能：

累積量：LCD 六位數

歸零量：LCD 六位數

流速：LCD 六位數

法蘭尺寸：進口(一體型)：1" 1½" 2"

搭配台製：½" ¾" 1" 1½" 2" 2.5" 3"

GPI / Flomec PVDF FLOW METER

適合：超純水、強酸鹼液體



顯示功能：

累積量：六位數

歸零量：六位數

流速：六位數

防爆：FM、ATEX

防水：IP65

接續：由令或法蘭

液體黏度：100CP 以內

鋰電池壽命：3 年以上
(未經曝曬)

Fitting Type : NPT or ISO (Female) BSPT

Housing Material : PVDF

Meter Sizes Available : 1/2" 1"

Flow Range : 1/2" (P05) 1.2~12GPM(4.54~45.42LPM)

1" (P10) 5~50GPM(18.9~190 LPM)

Accuracy : Turbine Only Turbine w/Comperature

1/2" (P05) ±2% ±1.5%

1" (P10) ±1.5% ±1.0%

Repeatability : ±0.3%

Pressure : 100PSI / 6.9Bar

Operating Temperature Range : -28°C ~ 82°C

With Computer : -18°C ~ 60°C

Maximum Storage Range : -40°C ~ 121°C

Typical K-Factor : 1/2" (P05) 2400PPG/634PPL

1" (P10) 540PPG/143PPL

Wetted Materials : Housing : PVDF

(15%Carbon Fiber Filled)

Bearings : Ceramic-98% Alumina

Shaft : Ceramic-98% Alumina

Rotor : PVDF

Rings : Fluorocarbon

Optional O-R-ring : PTFE

Frequency Range : 1/2" (P05) 48~480 Hz @ 1.2~12GPM

1" (P10) 45~450 Hz @ 5~ 50GPM

Recommended Strainer Size : 1/2" (P05) 60mesh

1" (P10) 30mesh

Maximum Flow : 1/2" (P05) 15GPM (56.85LPM)

1" (P10) 75GPM (284 LPM)

Shipping Weight : 1/2" Turbine Only : 1.1 Ibs/.54kg

1/2" Turbine Only : 1.7 Ibs/.77kg

GPI / Flomec (G 系列)高精度流量計

適合：高精度、高壓、高溫、食品級 3A



Pipe Size : ½" ¾" 1" 1½" 2" 3"
Flow Range : 2.2~2271 l/min
Pressure : Max 170~340 Bar
Accuracy : ±0.5% Rep : ±0.1%
Temperature : -268~ 426°C
Materials : SUS316, Shaft : 316SUS
Output : 50-1000Hz (NPN Open Collector)
Connection : NPT , BSPP , ISO , Flange



Pipe Size : 1" 1½" 2"
Flow Range : 25~1250 l/min
Pressure : Max 10 Bar
Accuracy : ±0.5% Rep : ±0.1%
Temperature : -74~ 140°C
Materials : SUS316/Rotor : PEEK
Output : 100-1000Hz (NPN Open Collector)
Connection : Tri-Clamp , 3A Sanitary

以上產品功能：

(1)顯示：

Totalizer : 6 Digits Counter

Flow Rate : 6 Digits Counter

Resttable : 6 Digits Counter

(2)搭配台製錶：

Model : MFRT-ONNB/MMR-ONNB/MC-726-1(設定錶)

顯示：累積量、歸零量、流速

輸出：4~20mA、RS485、Alarm、0~10V

(3)法蘭尺寸：進口(一體型) : ¾" 1" 1½" 2" 3"

搭配台製 : ½" ¾" 1" 1½" 2" 3"

GPI / Flomec (橢圓式)顯示：累積量，流速，歸零量

適合：超微量、高黏度、超高壓、高精度



Pipe Size : 1/8" 1/4" 3/8"
Flow Range : 8.3~9100 cc/min
Pressure : MAX 15~400 bar
Accuracy : $\pm 1\%$ at 3cps Rep : $\pm 0.03\%$
Temperature : -20~ 150°C
Materials : SUS316 , Aluminum
Output : Reed Switch , Pulse , 4-20mA
Viscosity : MAX 100000 CPS
Connection : BSPP、ISO、NPT 牙口式



一體型：搭配進口顯示器：

(A)RT12：

Totalizer : 8 Digits Counter (LCD)
Resttable : 8 Digits Counter(LCD)
Flow Rate : 5 Digits Counter(LCD)
Relay : Two Stage
Intrinsic safe : Exia 11B T4 (IECEX/ATEX)
Rate Output : 4~20mA
Pulse Output : NPN Transistor

(B)RT40：大數字顯示，功能與 RT12 相同

(C)M3：Totalizer : 7 Digits Counter(LCD)
Batch : 4 Digits Counter(LCD)

(D)分離型：搭配台製顯示器：

(a)MFRT-0NNB：顯示累積量、流速
4~20mA 或 RS-485

(b)MC-726-1 : 批量控制

GPI / Flomec (橢圓式)顯示：累積量，流速，歸零量

適合：高黏度、超高壓、高精度、大流量範圍



Pipe Size : 1/2" 1" 1½" 2"
Flow Range : 1~450 l/min
Pressure : Max 20~400 Bar
Accuracy(3CP) : ±0.5% Rep : ±0.03%
Temperature : -20~ 150°C
Materials : SUS316 , Aluminum, PPS
Output : Reed Switch , Pulse , 4-20mA
Connection : BSPP 、 NPT 、 Flange



Pipe Size : 3" 4"
Flow Range : 35~1500 l/min
Pressure : Max 10~12 Bar
Accuracy : ±0.2~0.5% at 3cp
Repeatability : ±0.03%
Temperature : -20 ~ 120°C
Materials : Aluminum 、 Stainless(80A)
Output : Reed Switch , Pulse , 4-20mA
Connection : JIS10K 、 法蘭、其他

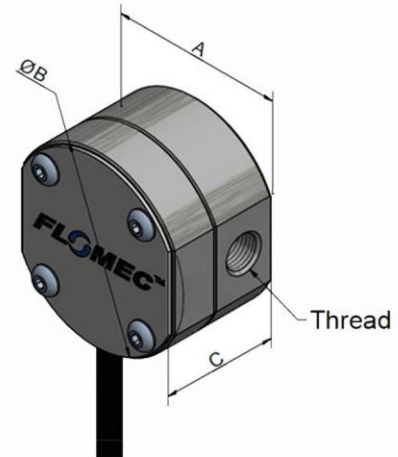


- (A) 一體型：搭配進口顯示器：
G5 Display With Pulse
G6 Display With 4-20mA
RT12 Display With 4-20mA
RT40 Display(大) With 4-20mA
- (B) 分離型：搭配台製顯示器：
MFRT-0NNB (Total/Rate/RS485)
MMR-0NNB (Rate/RS485)
TMF-0NNB (Pulse 轉 4-20mA)

EGM-Series Electronic Flowmeter

Dimensions

Meter	Dimension	Dimension	Dimension
Model	A	B	C
EGM004	46mm [1.81"]	49.5mm [1.95"]	35mm [1.38"]
EGM006	58mm [2.28"]	64.5mm [2.54"]	39mm [1.54"]
EGM008	58mm [2.28"]	64.5mm [2.54"]	49mm [1.93"]
EGM015	72mm [2.84"]	82mm [3.23"]	66mm [2.60"]
EGM020	72mm [2.84"]	82mm [3.23"]	77mm [3.03"]



Specifications

Model	EGM004	EGM006	EGM008	EGM015	EGM020
Nominal size	1/8" [4mm]	1/4" [6mm]	3/8" [8mm]	1/2" [15mm]	3/4" [20mm]
Nominal Flow range @ 3cP	1 - 36 L/hr	2 - 100 L/hr	15 - 550 L/hr	1 - 40 L/min	3 - 80 L/min
	[0.26 - 9.5 USG/hr]	[0.5 - 26.4 USG/hr]	[4 - 145 USG/hr]	[0.3 - 10.6 USG/min]	[0.8 - 21.1 USG/min]
Flow range @ 1cP	2 - 24 L/hr	5 - 80 L/hr	18 - 440 L/hr	1.5 - 32 L/min	5 - 64 L/min
Flow range @ 7cP	0.5 - 36 L/hr	1 - 100 L/hr	15 - 550 L/hr	0.5 - 40 L/min	2 - 80 L/min
Flow range @ 200cP	0.4 - 36 L/hr	0.7 - 100 L/hr	6 - 550 L/hr	0.4 - 40 L/min	1.8 - 80 L/min
Flow range @ 500cP	0.25 - 27 L/hr	0.5 - 75 L/hr	2 - 550 L/hr	0.3 - 40 L/min	1.5 - 80 L/min
Flow range @ 1000cP	0.12 - 16 L/hr	0.3 - 45 L/hr	1.5 - 360 L/hr	0.2 - 25 L/min	1 - 50 L/min
Accuracy*	±1% of reading			±0.5% of reading	
Repeatability	Typically ±0.03% of reading				
Ambient Temperature Range	-15°C - +80°C [5°F - +176°F]				
Fluid Temperature Range	-5°C - +80°C [23°F - +176°F]				
Max. Pressure (AI meters)	34 Bar [500 psi]	34 Bar [500 psi]	34 Bar [500 psi]	20 Bar [290 psi]	20 Bar [290 psi]
Max. Pressure (SS meters)	55 Bar [800 psi]	55 Bar [800 psi]	34 Bar [500 psi]	20 Bar [290 psi]	20 Bar [290 psi]
Protection Class	IP65				
Recommended filtration	200 mesh [75 micron]			100 mesh [150 micron]	
Pulse Output Type	NPN Open Collector (Hall Effect Sensor)				
Voltage	5 - 24VDC				
Current Draw	20mA max.				
Switching Current	10mA max.				
Pulse Output Resolution - Standard	2800 [10600]	1060 [4012]	720 [2725]	170 [644]	105 [398]
pulse/L [pulse/USG]					
Pulse Output Resolution - Fuel Cons. Option pulse/L [pulse/USG]	2800 [10600]	1060 [4012]	180[681]	42.5 [161]	26.3 [99.5]
RTD Specification (Integral Option 2)	Platinum Resistance Thermometer 100 Ohms (PT100) Class F0.3				



Flomec medium capacity flowmeters

Volumetric flow measurement of clean liquids used in automotive, aviation, mining, power, chemical, pharmaceutical, food, paint, petroleum industries.

For distribution of fuels, fuel oils, lubricants, alcohols, solvents, blending of bio and ethanol fuels, metering of chemicals, grease, adhesives, ink, insecticides and pumps or gravity fed non-conductive liquids.

Features / Benefits

- High accuracy and repeatability, direct volumetric reading
- No requirement for flow conditioning (straight pipe runs)
- Measures high and low viscosity liquids
- Quadrature pulse output option and bi-directional flow
- Optional Exd I/IB approval (ATEX, IECEx)
- Only two moving parts

Meter Selection

- **Aluminium** meters for petroleum products (oils and grease, fuels and fuel oils)
- **Stainless steel** meters for the chemical, cosmetic, food and pharmaceutical industries (water based liquids)
- **Blind pulse** meters available with reed switch and Hall Effect outputs. Optional Quadrature pulse and Integral 4-20mA outputs are available

Integral Instruments

Options include integral LCD totalisers, flow rate totalisers and batch controllers (4-20mA, scaled pulse, alarms and batch control)

- BT LCD 5-digit reset, 8-digit cumulative totaliser
- RT12 LCD 6-digit reset, cumulative totaliser and flow rate, analog and pulse outputs
- RT40 LCD 6-digit reset, cumulative totaliser and flow rate. Backlit Display
- EB LCD 6-digit 2 stage batcher and cumulative totalizer
- M/V* = Mechanical registers (see model numbering)

(Available for remote mounting and with I.S. approvals)

General Specification

Flowrates: 0.26 - 150 US gal/min. (1 - 580 litres/min.)*

Sizes: 1/2" - 2" NB (15-50 mm)

Materials: Aluminium, 316 Stainless steel or Ryton (PPS)

NMI Approved Meters

Meters 1" and above available with optional NMI pattern approval and quadrature pulse output

National Measurement Institute (NMI) Weights and Measures Approval – Australia

* See also **Small and Large Capacity** data sheets for other size meters.



Flomec large capacity flowmeters

Volumetric flow measurement of clean liquids used in receipt verification, loading, un-loading and distribution management at petroleum plants, mine sites, marine and aviation facilities. For pumped or gravity fed distribution of fuels, oils, solvents, alcohols.

Features / Benefits

- High accuracy and repeatability, direct volumetric reading
- No requirement for flow conditioning (straight pipe runs)
- Various rotor material options
- Measures high and low viscosity liquids
- Quadrature pulse output option and bi-directional flow
- Optional Exd I/IIb approval (ATEX, IECEx)
- Only two moving parts

Meter Selection

- **Aluminium** meters for petroleum products (oils and grease, fuels and fuel oils)
- **Stainless steel** meters for the chemical, cosmetic, food and pharmaceutical industries (water based liquids)
- **Blind pulse** meters available with reed switch and Hall Effect outputs. Optional Quadrature pulse and Integral 4-20mA outputs are available

Integral Instruments

Options include integral LCD totalisers, flow rate totalisers and batch controllers (4-20mA, scaled pulse, alarms and batch control)

- BT LCD 5-digit reset, 8-digit cumulative totaliser
- RT12 LCD 6-digit reset, cumulative totaliser and flow rate, analog and pulse outputs
- RT40 LCD 6-digit reset, cumulative totaliser and flow rate. Backlit Display
- EB LCD 6-digit 2 stage batcher and cumulative totalizer
- M/V* = Mechanical registers (see model numbering)

(Available for remote mounting and with I.S. approvals)

General Specification

Flowrates: 10 - 660 US gal/min. (35 - 2500 litres/min.)*

Sizes: 3" - 4" NB (80-100 mm)

Materials: Aluminium, 316 Stainless steel

NMI Approved Meters

Meters 1" and above available with optional NMI pattern approval and quadrature pulse output

National Measurement Institute (NMI) Weights and Measures Approval – Australia

* See also [Small and Medium Capacity](#) data sheets for other size meters.

TURBO PULSE TURBINE FLOWMETERS

FLOMEC Turbopulse Turbine Flowmeters measure flows of low viscosity liquids from 3 to 7000 litres/hr in a range of sizes from ½" to 20" (12-500mm). TP series flowmeters have an axial rotor and flow guides & need to be installed in straight sections of pipe either horizontal or vertical so that the flow is conditioned. TP series flowmeters can be purchased with Exd & Intrinsically Safe (I.S) approvals for use in hazardous areas. Applications include the distribution of fuels, alcohols, solvents, metering of chemicals, insecticides, water & light hydraulic oils.

Features / Benefits

- High accuracy & repeatability, direct reading flowmeter
- Low cost of ownership, wide flow range
- Rugged & compact design
- Certified Exd & I.S hazardous area versions
- Integral 4-20mA output option
- ± 0.15% linearity option (TP100 and above)



Integral Instruments

FLOMEC TP series meter options include integral LCD totalisers, flow rate totalisers & batch controllers. These instruments provide monitoring & control outputs including 4~20mA, scaled pulse, alarms & batch control:

- FBT LCD 5 digit reset, 8 digit cumulative totaliser.
 - RT12 LCD 6 digit reset, cumulative totaliser & flow rate. Analogue and pulse outputs
 - RT40 LCD 6 digit reset, cumulative totaliser & flow rate. Backlit Display.
 - EB LCD 6 digit 2 stage batcher & cumulative totaliser.
- (Instruments also available for remote mounting and with I.S. approvals)

Specifications

Model prefix:	TP-Turbopulse
Nominal size (inches)	12 ~ 500mm (1/2" ~ 20")
**Accuracy @ 3cp	± 0.5% of reading (accuracy is ± 0.2% of reading with optional RT12 with non-linearity correction)
Temperature range	-40°C ~ +200°C (-40°F ~ +400°F), refer factory for lower temperature
Maximum Viscosity	10 Cst
Maximum pressure	(Threaded meters)bar (PSI)
316 Stainless steel	250 (3625)
Electrical - (see also optional output - Turbopulse pick-off types)	
Standard output	Pick-off Coil
Optional outputs	4~20mA, scaled pulse, quadrature pulse, flow alarms or two stage batch control
Physical	
Protection class	IP66/67 (NEMA4X), optional Exd IIB T4/T6, integral ancillaries can be supplied I.S. (intrinsically safe)
Overall dimensions	Refer over page

FLOW RANGES - TP Turbopulse

size	model	litres/hr (GPH)
½"	TP010	100~1100 (0.44~4.4)
¾"	TP012	220~2200 (0.97~9.7)
¾"	TP015	400~4000 (1.77~17.7)
¾"	TP020	800~8000 (3.5~35.2)
m3/hr (GPM)		
1"	TP025	1.6~16 (7~70)
1½"	TP040	3.4~34 (15~150)
2"	TP050	6.8~68 (30~300)
3"	TP080	13~135 (60~600)
4"	TP100	27~270 (120~1200)
6"	TP150	55~550 (240~2400)
8"	TP200	110~1100 (480~4800)
10"	TP250	190~1900 (840~8400)
12"	TP300	270~2700 (1200~12000)
16"	TP400	400~4000 (1800~18000)
20"	TP500	700~7000 (3000~30000)

GPI / Flomec (蹠輪式)顯示：累積量，流速，歸零量

適合：超低溫、高溫、大管徑 (插管式)



Pipe Size : DP490(1.5" ~ 36")
DP525(2" ~ 100")
Flow Range : DP490 (15 l/min ~ 378m³/min)
DP525 (24 l/min ~ 2940m³/min)
Pressure : Max 80 Bar
Material : Body : 316SUS, Rotor : PVDF/PEEK
Temperature : -40~ 150°C
Output : Reed Switch , Pulse , 4~20mA ,
Alarm : Two Stage
Connection : 1½" 2" BSPT NPT (插管接頭)



防爆型顯示器(ATEX、FM、IECEX、IP67)
型號 : E108
顯示 : Total/Flow Rate
輸入 : Magnetic Pickup、Contact Closure
DC Pulse
輸出 : Hi/Low Alarm、Pulse、4-20mA
型號 : E110
顯示 : Total/Flow Rate
輸出 : Pulse、4-20mA



LCD 顯示器(IP66、IP67)
型號 : F018
顯示 : Total/Flow Rate
High/Low Alarm
輸出 : Pulse Output、4-20mA

GPI / Flomec (蹠輪式)顯示：累積量，流速，歸零量

適合：超低溫、大管徑



LCD 顯示器

型號：RT40

顯示：Total/Flow Rate/Resttable
(LCD 大字體)

Resttable：6 Digit Counter

Flow Rate：5 Digit Counter

輸入：Pulse, Frequency



LCD 顯示器

型號：RT12

顯示：Total/Flow Rate/Resttable

Resttable：8 Digit Counter

Flow Rate：5 Digit Counter

Pulse Output：NPN Open Collector、4-20mA
Hi/Low、Alarm

可搭配 GPI/ FLOMEC SENSOR



LCD 控制器

型號：EB10

顯示：Totalizer：8 Digit Counter

Batch：8 Digit Counter

單位：LTR、GAL、M³、16kg

輸入：Reed Switch、NPN、Current、Frequency

電源：DC24V、AC92~240V

GPI / Flomec (商業型)顯示：累積量，歸零量，流速

低單價，適合：油、有機溶劑、水、低黏度液體



Pipe Size : 1" / (Inner 6.35mm)
Flow Range : 1~100 L/Min
Accuracy : ±1%~1.5% REP : ±0.2%
Pressure : Max 3.4 Bar
10.2 Bar(Nylon) / 21 Bar(Aluminum)
Temperature : 60°C (Aluminum)
120°C (Aluminum 分離)
60°C (Nylon)
Material : Body : Aluminum / Nylon
Output : 11~608 Hz

GPI / Flomec (電子式)顯示：累積量，歸零量，流速

超優惠價，PVC，TM METER (適合：PURE WATER、WATER)



Pipe Size : ½" ¾" 1" 1½" 2"
Flow Range : 3.8~760 l/min
Pressure : Max 10.3 Bar
Accuracy : ±2% Rep : ±0.5%
Temperature : 60°C
Materials : Body : PVC , Rotor : PVDF
Output : 26-660PPL (NPN Open Collector)
Connection : BSPP、NPT, 80# , Spigot



Pipe Size : 3" 4"
Flow Range : 151~2271 l/min
Pressure : Max 9.1 Bar
Accuracy : ±2% Rep : ±0.5%
Temperature : 60°C
Materials : Body : PVC/Rotor : Acetal
Output : 4.5-11PPL (NPN Open Collector)
Connection : BSPP、NPT#80 Spigot
Flange : 150#ANSI , DIN10 , JIS10K

GPI / Flomec (齒輪式)顯示：累積量，歸零量

超優惠價，適合：機油、潤滑油(中低壓)



輸出型



顯示型



防爆型

Pipe Size : ½"(牙口式)
Flow Range : 1~30 L/Min
Accuracy : ±0.5%
Pressure : Max 69 Bar
Temperature : Max 55 °C
Material : Aluminum
Output Pulse : NPN Open Collector

GPI / Flomec (經濟型)顯示：累積量，歸零量

低單價，適合：油、有機溶劑、水、低黏度液體



Pipe Size : 1" (BSPP、NPT)
Flow Range : 10~100 L/Min
Accuracy : ±3% REP : ±0.5%
Pressure : 21 Bar(Aluminum)/ 10.3 Bar(Nylon)
Temperature : Max 55°C
Material : Body : Aluminum / Nylon
四位數 LCD 顯示

GPI / GPRO (機械式)汽油、柴油流量計



Model : MR5-30 (機械錶)
 Flow Range : 19~114 L/Min
 Accuracy : ±2%
 Pressure : Max 3.4 Bar
 Temperature : 55°C
 Connection : ¾" 1" 1½" BSPP



Model : FM-100、F200 (簡易型)
 Flow Range : 15~76 L/Min
 Accuracy : ±2%
 Pressure : Max 3.4 Bar
 Temperature : 55°C
 Connection : ¾" 1" BSPP



Model : DR5-30 (電子錶)
 Flow Range : 19~114 L/Min
 Accuracy : ±1%
 Pressure : Max 3.4 Bar
 Temperature : 55°C
 Connection : ¾" 1" 1½" BSPP
 Unit : Gallons、Litres、Ounces
 Power : AA Lithium Batteries



Flow Range : 7~76 L/Min
 Accuracy : ±2% Rep : ±0.5%
 Pressure : Max 3.4 Bar
 Viscosity : Max 1000 CPS
 Material : Polyester
 Connection : 1"

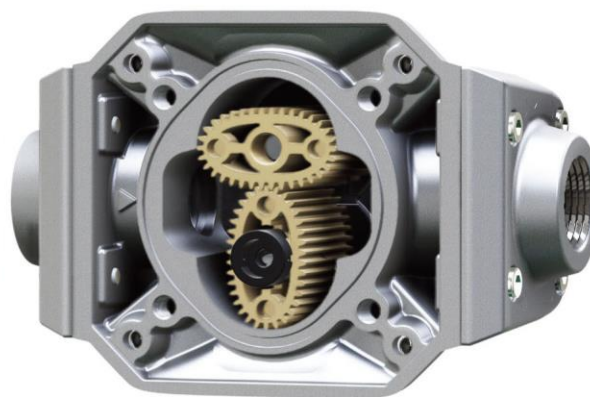
超低價，防爆型、機械錶、電子錶顯示

高精密度流量計 (防爆型)

QM 240 & QM 150 FUEL METERS



Oval Gear Technology
& A Magnetic Drive...



"Makes others look like
they're just guessing"

MODEL	QM 150 N (OVAL GEAR)
流量精度	0.5% (8 TO 150 L/MIN) 0.25% (57 TO 132 L/MIN)
流量範圍	8 TO 150 L/MIN
耐 溫	MAX 52°C
耐 壓	MAX 3.4BAR
材 質	本體：ALUMINUM 轉子：PPS 墊片：NBR
壓力點	75 L/MIN (3 PSI AT Diesel) 150 L/MIN (7 PSI AT Diesel)
計 數	累積量：99,999,999 (8 位數) 歸零量： 9999 (4 位數)
接 續	接續：1" NPT (female)



ROOTS · PD METER



MJA(Standard)



MJAR(Restable)



MJA (High Temperature)



MJA (Signal Output)

Ordering Information (Roots)

Model No	Body Material
MJA Standard Type	(A)Cast Iron (B)Carbon Steel (C)SUS 304 (D)SUS 316
MJAR Zero Resettable	Inner Housing/Roots (1)Cast Iron (2)Bonze (3)Aluminum (4)SUS 304 (5)SUS 316
MJAH High Temperature	
Size Connection 25A · 40A · 50A · 80A	Proof Type (IP65) (1)Weather (2)Explosion
Flange JIS10K · JIS20K ANSI150# 300#	
	Signal Output (1)100cc/pluse (2)1 liter/pluse (3) 10 liter/pluse (4)Without
MJA 25A (JIS 10K) - A 1 1 1	

FLOW RANGE : 400-45000 L/HR
ACCURACY : ±0.5%

GPI / GPRO (防爆型) 汽、柴、煤油加油機

汽車型(DC12V、24V)



Model : M150S(12V)、M240S(24V)
M180S(12V)、M-3025(12V)

Flow Range : 57 L/Min、69 L/Min、95 L/Min

Type : Rotary Gear、Carbon Vane

Inlet/outlet : 3/4" 1"

Nozzle : Auto Manual

Holdel : Lockable Nozzle

防爆型(AC110V/220V)



Model : M3120、M-3130

Flow Range : 76 L/Min、114 L/Min

Type : Carbon Vane

Inlet/outlet : 1" 1 1/4"

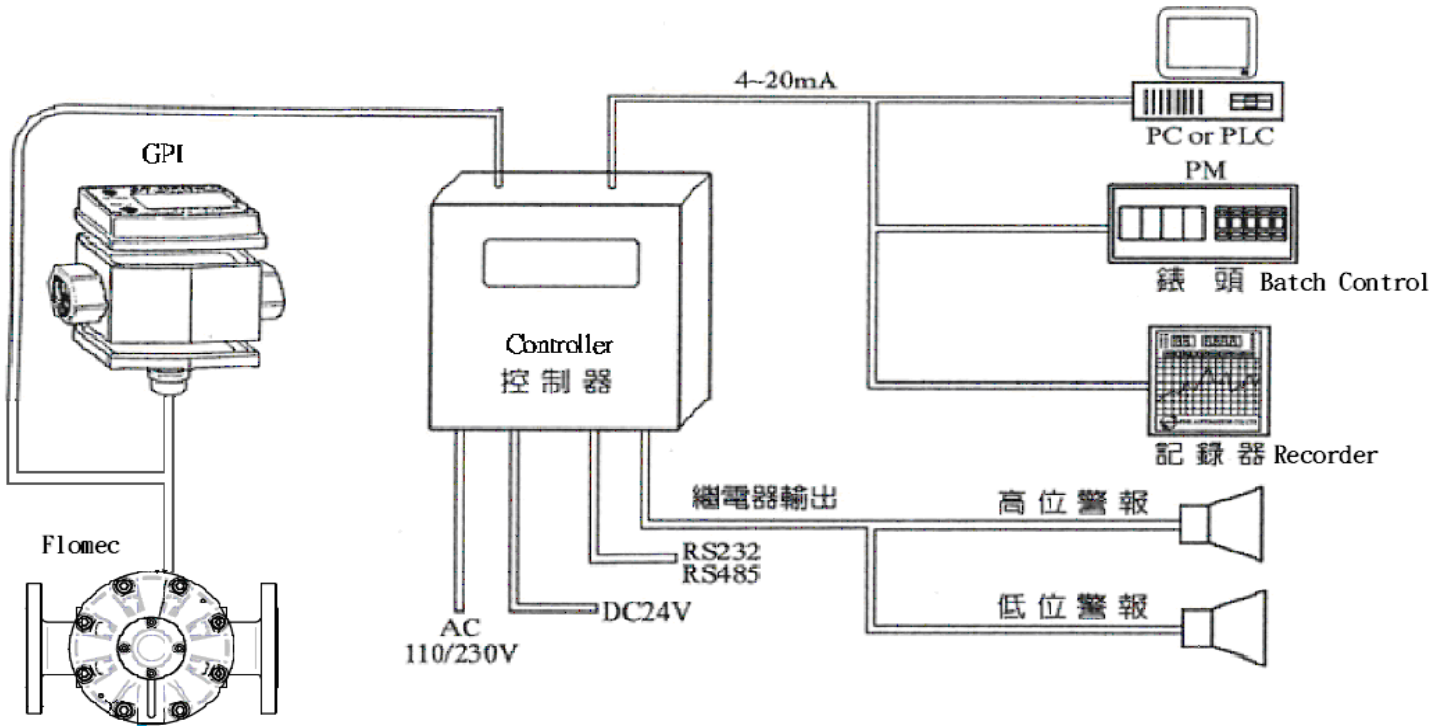
Nozzle : Auto/Manual

含有 : Lockable Nozzle Holder

※ PS 以上流量計及幫浦，本公司備有詳細說明資料：

歡迎來電索取。感謝!

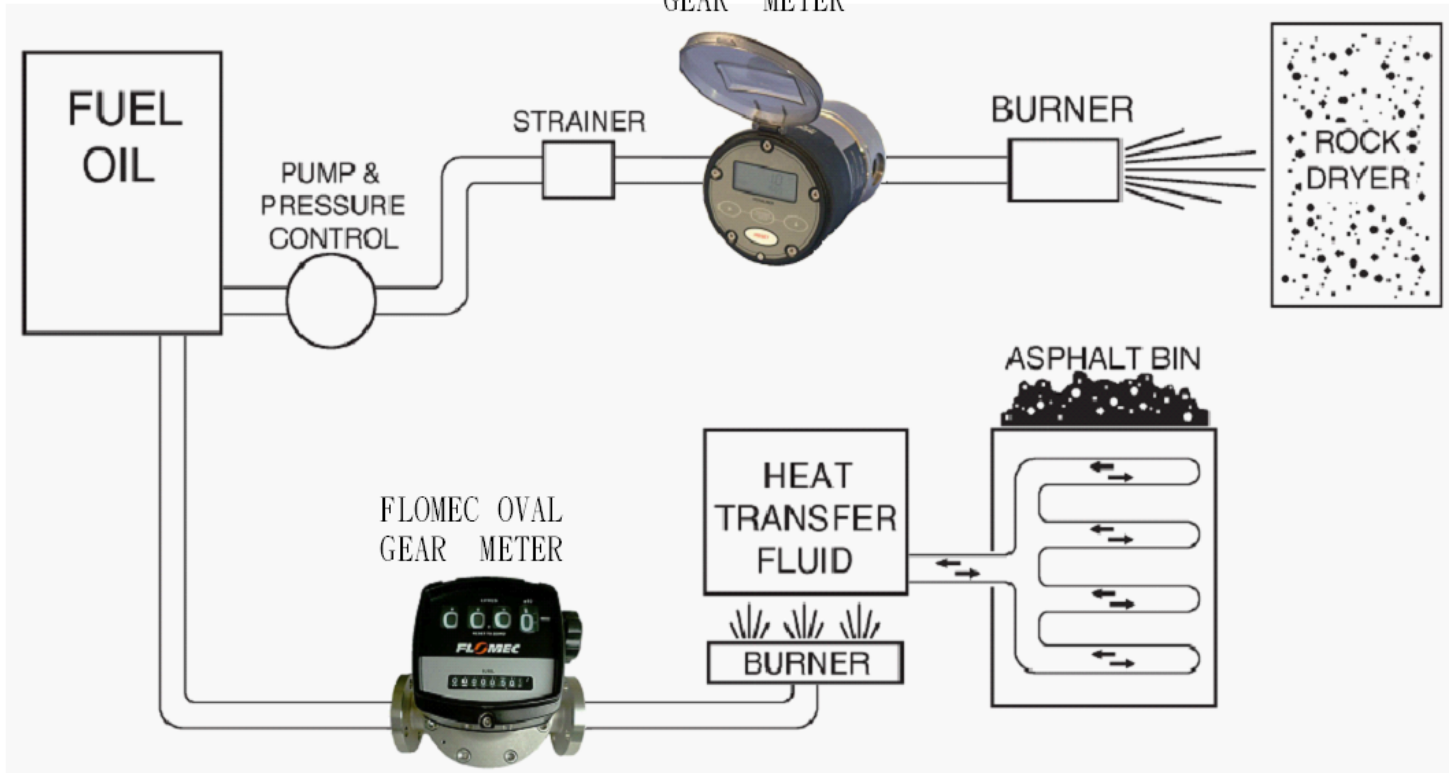
Flow Control System (流量控制流程圖)



Drawing of Application

燃燒系統應用簡易圖

FLOMEC OVAL GEAR METER



流量計產品系列



S-100
有機溶劑用



P-100
強酸鹼用



TM-100
純水用



T-100
食品液體用



FHK
咖啡機用



VSO .1
液壓油用



WG-50
高黏樹脂用



MJAR-50
重油用



MR5-30
柴油用



101-3T
微小流量用



AMF 500
電磁式(夾式)



AMF 900
電磁式(法蘭)



OM015
沙拉油用



MC-2536
蹠輪式



HM-2000H
超音波手提式



VISION 2000
飲水機用



N-50A
面積式(浮球)



HM-2000S
超音波

我們將推薦給您，精巧，高精度，高黏度，耐高壓，低價位的流量產品，煩請能將此份資料轉給相關人員。感恩!!

例：工務課、儀錶課、控制課、生產課、環安課、總務課、採購課...等。

公司：仕揚股份有限公司
地址：台北市中山區松江路 206 號 6 樓之 8
網址：WWW.GPIMETER.COM.TW

電話：02-2567-2677-8
傳真：02-2567-2709
信箱：mtctech@ms43.hinet.net